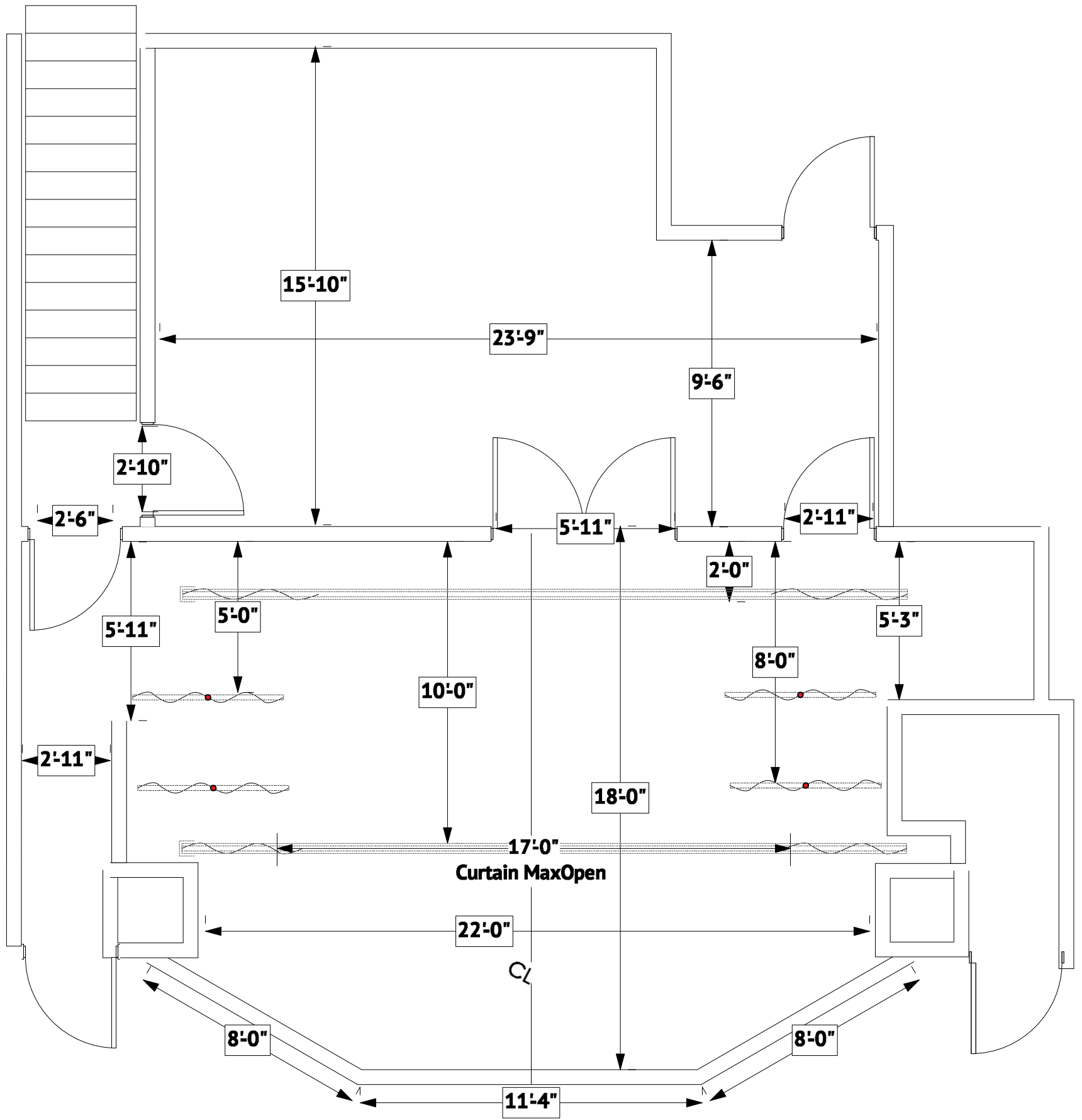



**NOTES:**

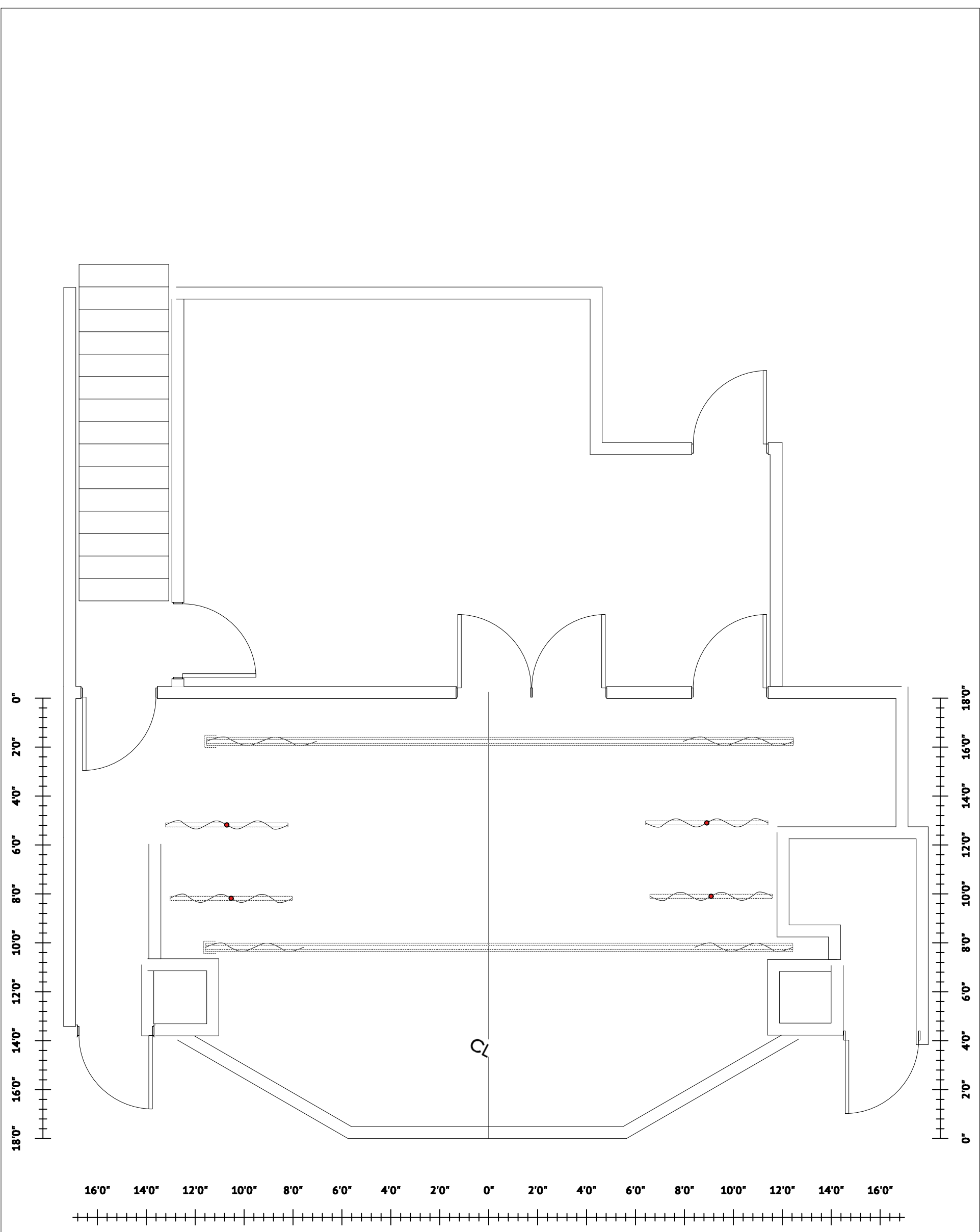
**LEG CURTAINS {5'8" WIDE} <-14'-> BETWEEN MIN**

**MAIN CURTAINS MAX OPEN <-17'->**




2 **Plan View**  
Scale: 1/4" = 1'-0"

DESIGNED BY <b>Ray</b>	SHEET SIZE <b>ASME B</b>	 <b>ADC</b> 659 Associated Designers of Canada
DRAWN BY <b>Ray Moschuk</b>	SCALE <b>1:1</b>	
CHECKED BY		
APPROVED BY	TITLE <b>Dimensions</b>	PROJECT NAME <b>Chester Playhouse</b>
OTHER APPROVALS	SHEET <b>2 OF 0</b>	PROJECT ADDRESS
FILE NAME		<b>22 Pleasant St Chester Nova Scotia</b>



3 **Top view**  
Scale: 1/4" = 1'-0"

DESIGNED BY <b>Ray</b>	SHEET SIZE <b>ASME B</b>	 <b>ADC</b> 659 Associated Designers of Canada
DRAWN BY <b>Ray Moschuk</b>	SCALE <b>1:1</b>	
CHECKED BY		
APPROVED BY	TITLE <b>Blank</b>	PROJECT NAME <b>Chester Playhouse</b>
OTHER APPROVALS	SHEET <b>3 OF 0</b>	PROJECT ADDRESS
FILE NAME		<b>22 Pleasant St Chester Nova Scotia</b>


0"  
20"  
40"  
60"  
80"  
100"  
120"  
140"  
160"  
180"

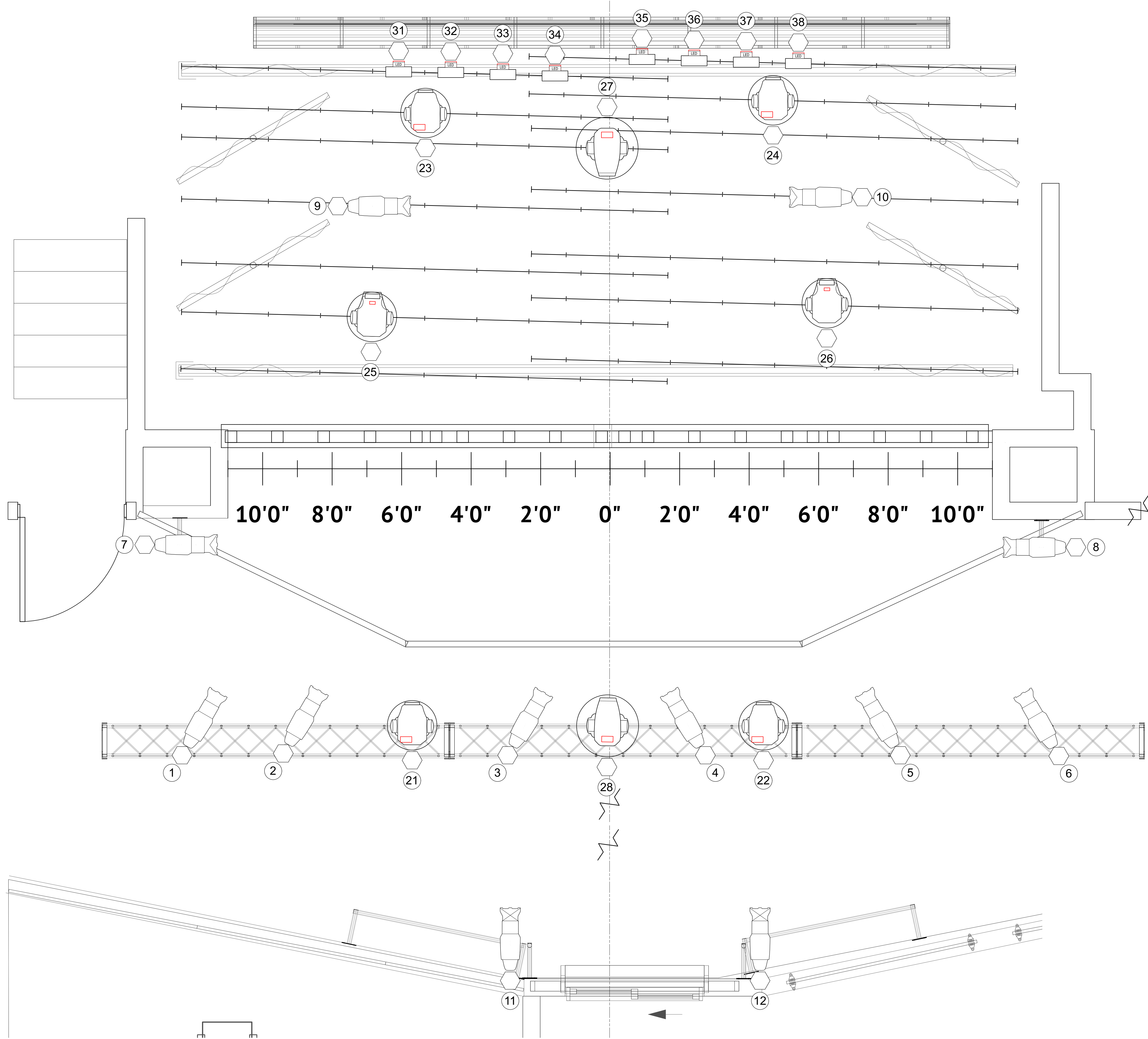
180"  
160"  
140"  
120"  
100"  
80"  
60"  
40"  
20"  
0"

16'0" 14'0" 12'0" 10'0" 8'0" 6'0" 4'0" 2'0" 0" 2'0" 4'0" 6'0" 8'0" 10'0" 12'0" 14'0" 16'0"

CL

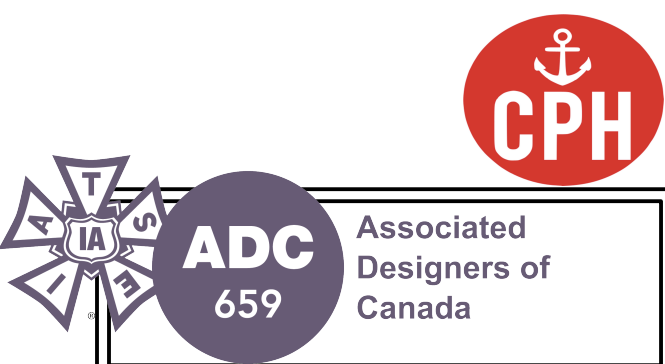
4 Top view Large  
Scale: 3/8" = 1'-0"

DESIGNED BY <b>Ray</b>	SHEET SIZE ASME B	 <b>ADC</b> 659 Associated Designers of Canada
DRAWN BY <b>Ray Moschuk</b>	SCALE <b>1:1</b>	
CHECKED BY		
APPROVED BY	TITLE <b>Blank</b>	PROJECT NAME <b>Chester Playhouse</b>
OTHER APPROVALS	SHEET <b>4 OF 0</b>	PROJECT ADDRESS
FILE NAME		<b>22 Pleasant St Chester Nova Scotia</b>



**Symbol Key**

	ADJ Mega Par Profile @ 18w 3 lb	8
	ETC CE Source4 19deg @ 575w 14lbs	2
	ETC CE Source4 36deg @ 575w 14lbs	6
	ETC CE Source4 50deg @ 575w 14lbs	4
	Martin ERA 300 Profile @ 374w 38 lb	4
	Highend Mini Star @ 374w 25 lb	2
	Ayrton Diablo @ 550w 48 lb	2



REV #	REVISION	DATE

**Chester Playhouse Rebuild 2022**

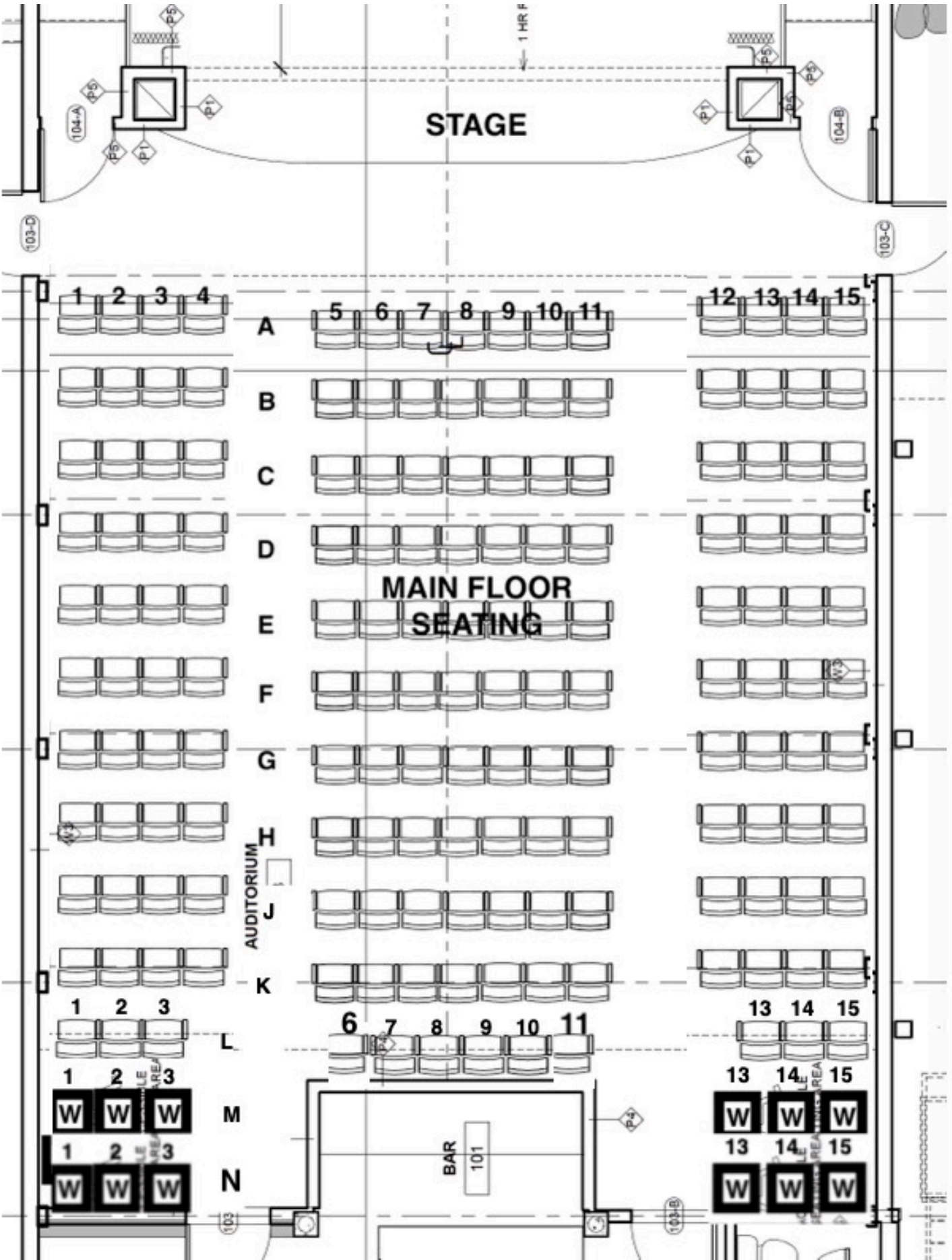
PRODUCED BY:  
**Chester Playhouse**  
Executive Director: Andrew Chandler  
Technical Director: Ray Moschuk

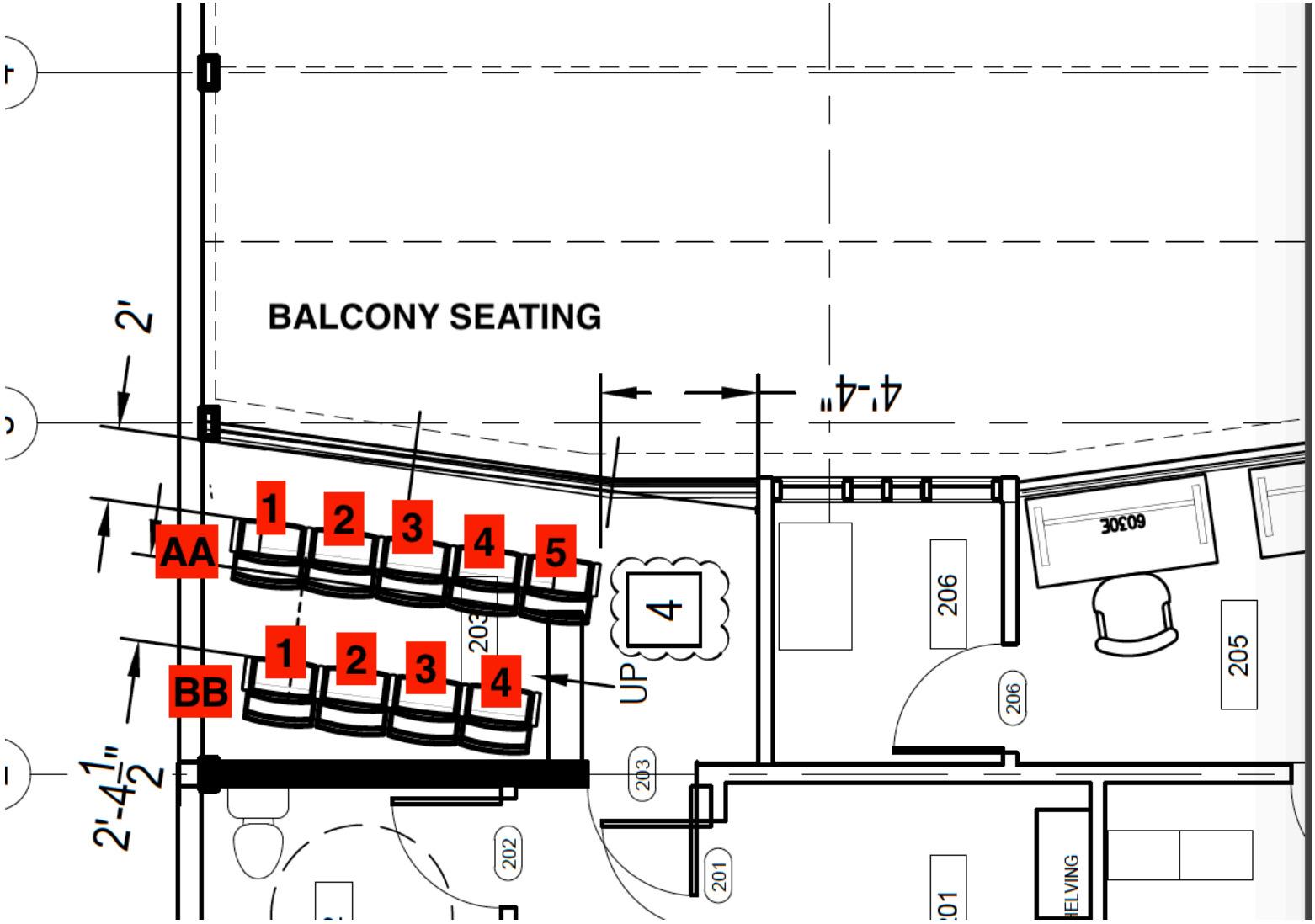
**Chester Playhouse**  
22 Pleasant St. Chester Nova Scotia

SCALE: 1/2" = 1'  
DATE: 2023-03-09  
DRAWN BY: Ray Moschuk

DRAWING  
**5**  
of 49

Lighting Plot





The fuel loads present in the Chester Playhouse theatre are required to be limited to those consistent with the following fuel packages. The fuel packages outlined herein are intended to be used as a guide for the Chester Playhouse staff and is not intended to be an all-encompassing list of possible fuel packages.

These packages have been selected on the basis that the heat-release rate for a given fuel package will not exceed 5,000 kW:

- Two Douglas Fir Christmas trees (dried, and less than 2 m high).
- Four artificial Christmas trees (approximately 2 m high).
- One mock living room (upholstered sofa, upholstered armchair, wood coffee table).
- One mock living room (upholstered sofa, wood coffee table, television on wood stand, wood end tables).
- One mock bedroom (steel bedframe, mattress, wood nightstand and dresser or wardrobe, but not both).
- Three mock vintage office workstations (wood desk, wood chair, computer, paper files).
- One mock modern office workstation (metal desk with plastic trim, cubicle dividers, steel chair with upholstered cushion and seatback, computer, paper files).
- 100 kg of homemade theatrical property comprised of the following material ratios:
  - Not less than 70% by mass of wood, paper/cardboard products, or natural fabrics and textiles, and
  - Not more than 30% by mass of polystyrenes, plastics, or synthetic fabrics and textiles.

The comparable real-world fuel packages outlined above have been selected based on data referenced from the full-scale fire testing summarized below.

Figure D1 below shows the full-scale heat-release rate test for Douglas Fir Christmas trees with varying moisture contents.